

Castle Instructions

What you will need for assembly

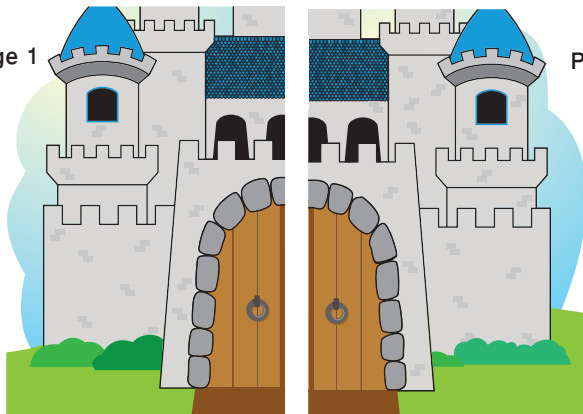
- Scissors
- Blu-Tac

Index

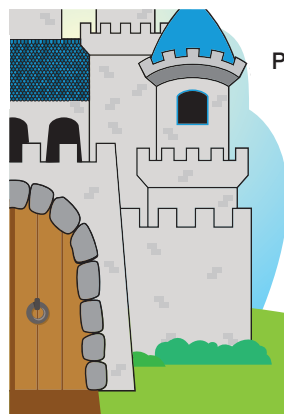
Page 3



Page 1



Page 2



1. Cut around the outside of the printed pages using scissors, there should be 3 pages in total.

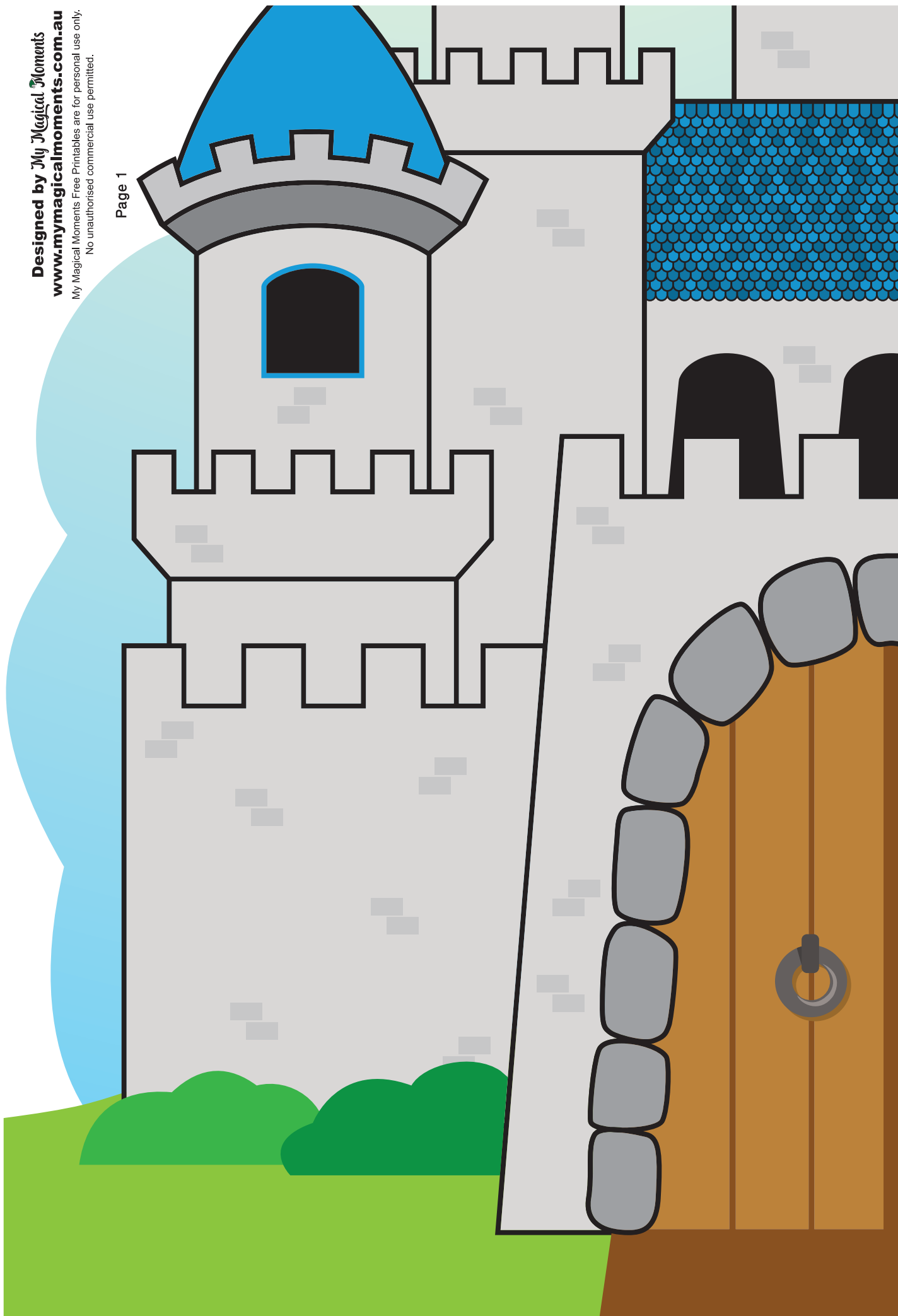
2. Using blu-tac, assemble to wall, starting with the 2 bottom castle pieces (Page 1 and Page 2), some overlap of pages has been added.

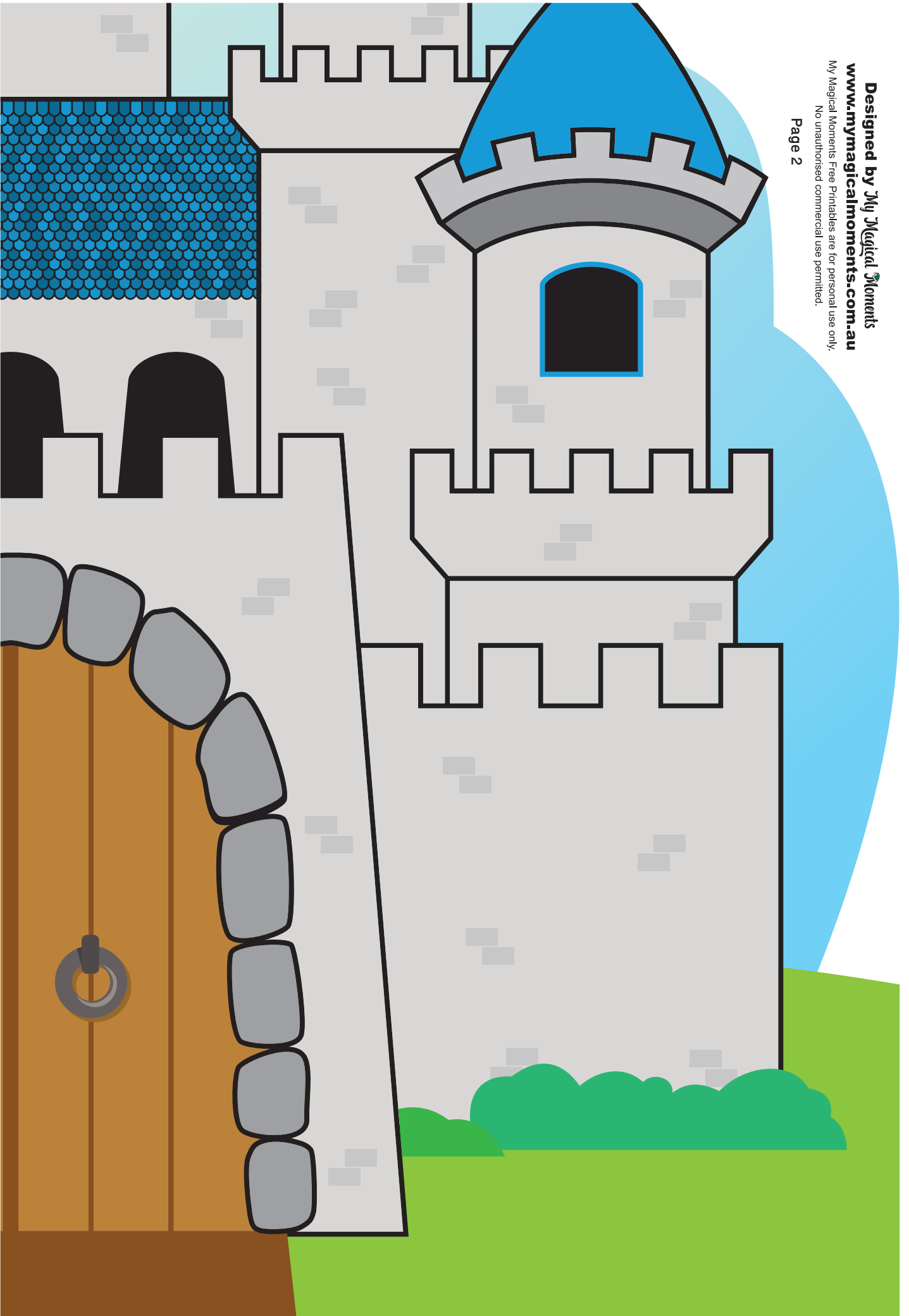
3. With more blu-tac, stick the top of the castle lined up with the bottom pieces. Allow for some overlapping of the top page.

Designed by My Magical Moments

www.mymagicalmoments.com.au

My Magical Moments Free Printables are for personal use only. No unauthorised commercial use permitted.







Designed by My Magical Moments
www.mymagicalmoments.com.au

My Magical Moments Free Printables are for personal use only.
No unauthorised commercial use permitted.